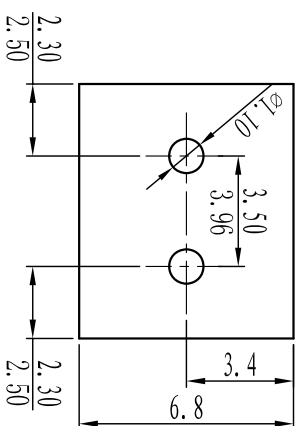
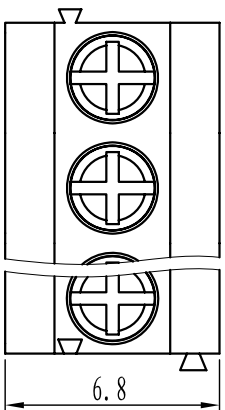
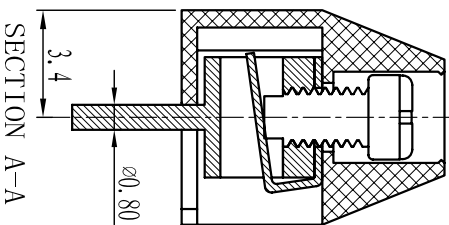
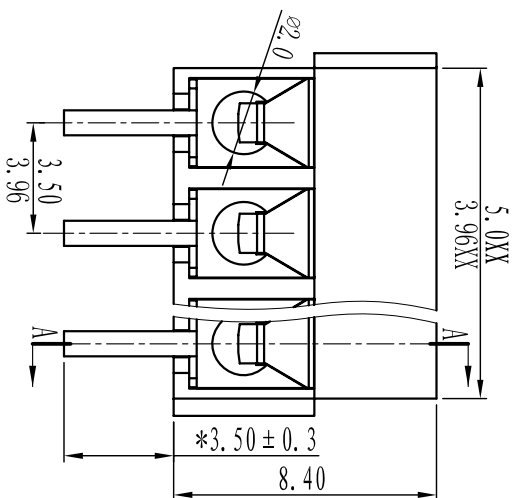




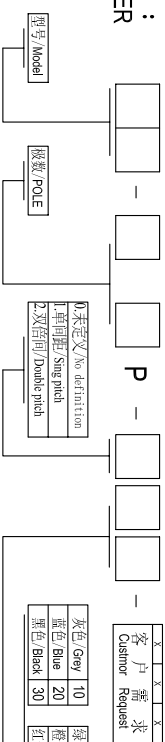
# 慈溪市万捷电子有限公司

## CIXI WANJIE ELECTRONIC CO., LTD

产品规格书  
product specification



### 订购方式： HOW TO ORDER



### TOLERANCES EXCEPT AS NOTED

Linear dimension	filled	chamfer	short angle sid	≡	□	∥	⊥
over 6 to 30	over 30 to 120	over 120 to 480	all to 6	over 6 to 10	over 10 to 50	over 50 to 120	all to 5
over 30 to 120	over 120 to 480	over 480 to 6	all to 6	over 6 to 10	over 10 to 50	over 50 to 120	all to 5
±0.1	±0.2	±0.3	±0.5	±0.9	±0.2	±0.5	±1
6	to 30	to 120	to 480	to 6	to 10	to 50	to 120
tolerance	±0.1	±0.2	±0.3	±0.5	±0.9	±0.2	±0.5

**电气性能/Electrical**  
 参考标准/Standard: UL IEC  
 额定电压/Rated voltage: 300V 250V  
 额定电流/Rated current: 10A 10A  
 接触电阻/Contact resistance: 20mΩ  
 使用线径/Wire range: 24-18AWG 1.0mm<sup>2</sup>  
 耐电压/Withstanding voltage: AC2000V/1Min  
 绝缘电阻/Insulation resistance: 500MΩ/DC500V

### 机械性能/Mechanical

温度范围/Temp.Range: -40°C~+105°C  
 扭矩/Torque: 0.2Nm(1.81lb·in)  
 剥线长度/Strip length: 4.5-5mm

### 尺寸/Dimensions

间距/Pitch: 3.50mm,3.96mm

极数/Poles: 2P-24P

材料及电镀/Material

塑件/Housing: PA66, UL94V-0

螺丝/Screws: M2.0, steel Zinc plated

方针/Pin header: Brass, Ni plated

弹片/Stripnet: Phosphor bronze, Ni plated

### 第一视角/FIRST ANGLE PROJECTION



单位/UNITS	mm	尺寸/SIZE	A4	比例/SCALE	比例
----------	----	---------	----	----------	----



慈溪市万捷电子有限公司  
CIXI WANJIE ELECTRONIC CO., LTD

名称/NAME  
WJ350/396-KXV-11Y-00A